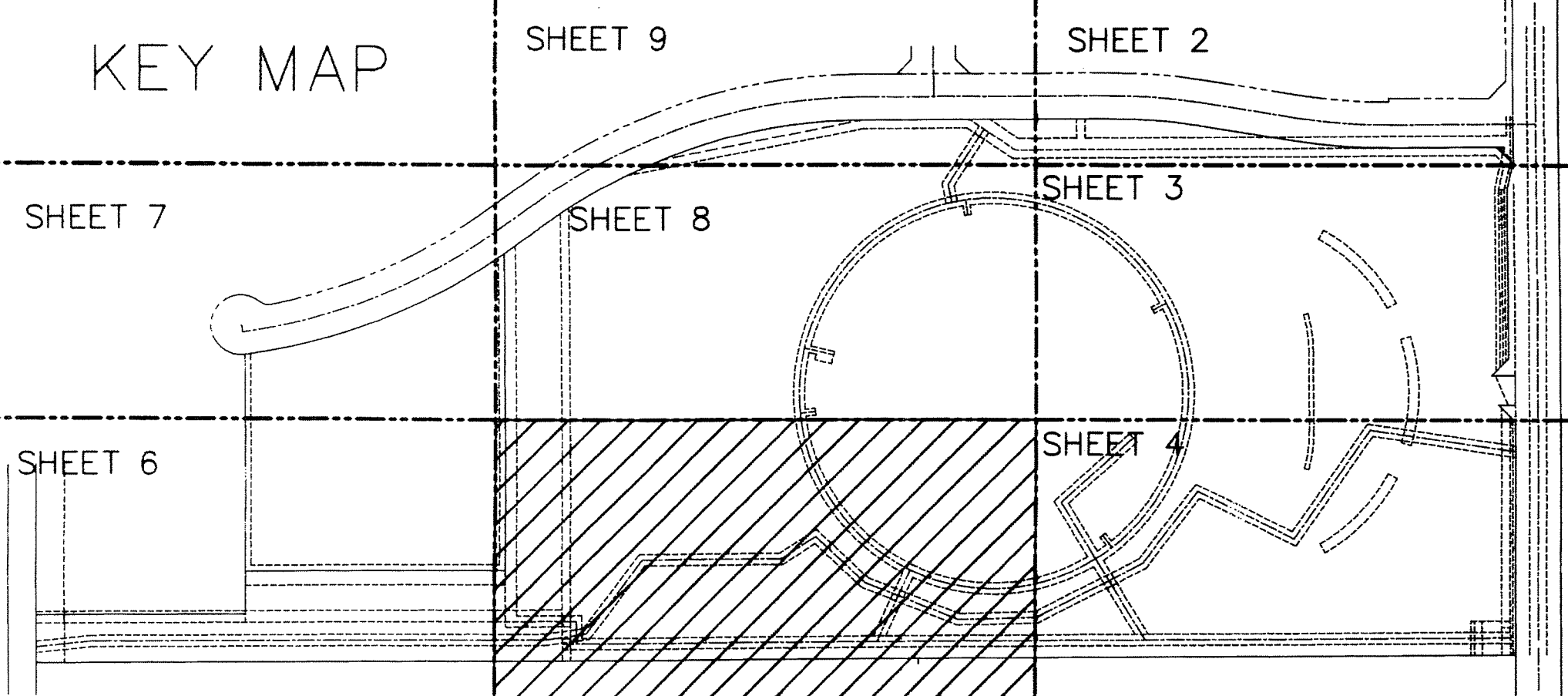


KEY MAP

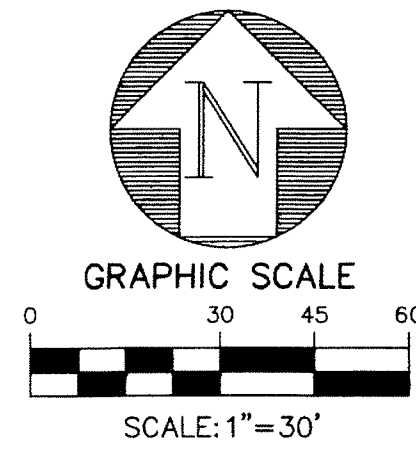


BETHESDA HEALTH CARE MUPD

BEING A REPLAT OF A PORTION OF PARCEL B-2 AND A PORTION OF PARCEL A-2 OF BOYNTON BEACH ENTERPRISE CENTER PLAT NO. 2 AS RECORDED IN PLAT BOOK 79, PAGE 152, LYING IN SECTION 28, TOWNSHIP 45 SOUTH, RANGE 42 EAST, PALM BEACH COUNTY, FLORIDA

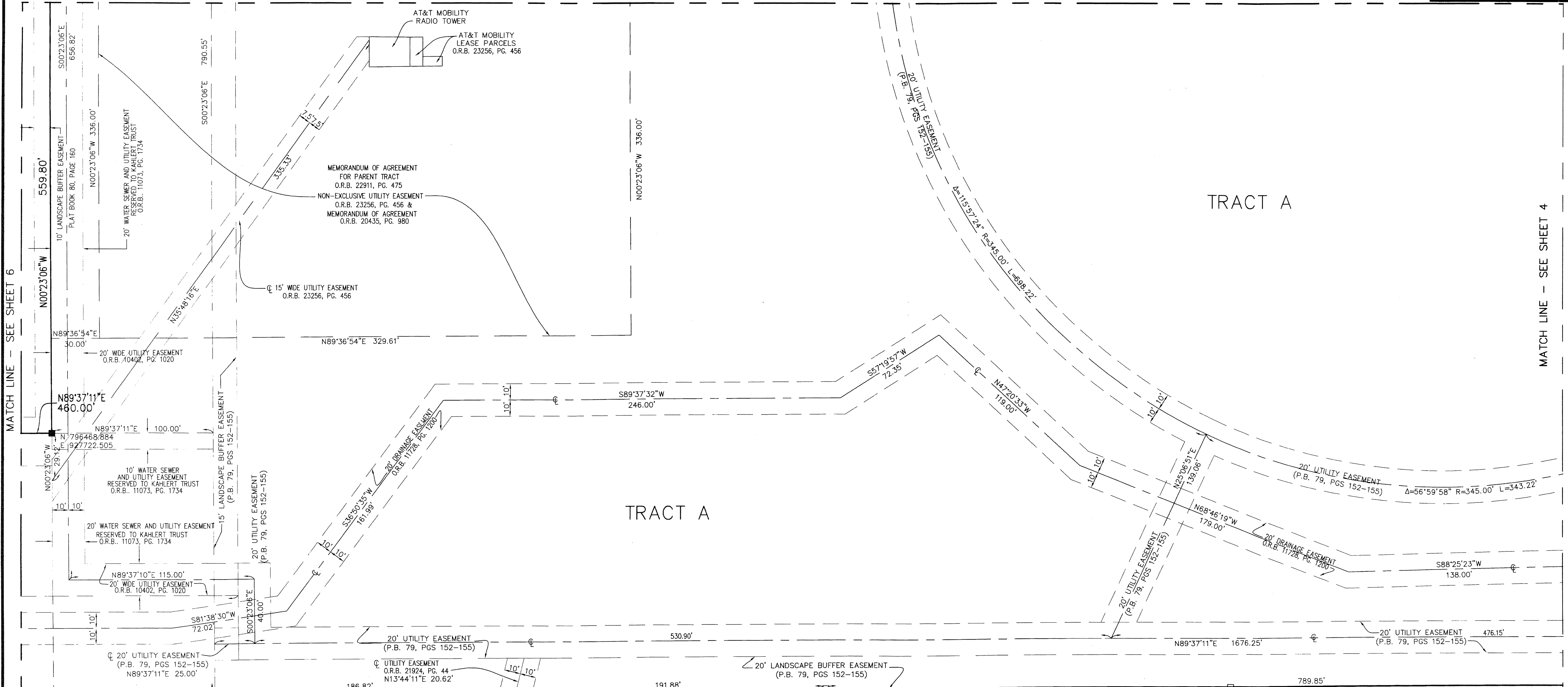
SHEET 5 OF 9

STATE OF FLORIDA }
 COUNTY OF PALM BEACH } S.S.
 THIS INSTRUMENT WAS FILED FOR
 RECORD AT _____
 THIS ____ DAY OF _____
 2011, AND DULY RECORDED
 IN PLAT BOOK NO. _____
 ON PAGE _____
 SHARON R. BOCK,
 CLERK AND COMPTROLLER



162

MATCH LINE - SEE SHEET 8



MATCH LINE - SEE SHEET 6

MATCH LINE - SEE SHEET 4

MINI ASSEMBLAGE P.U.D. PLAT SIX
 (PLAT BOOK 110, PAGE 147)
 P.B.C.P.R.
 NOT INCLUDED

FOUND 4" X 4" CONCRETE MONUMENT
 STAMPED PRM PLS #4676
 N 796312.071
 E 928202.282

S89°37'11"W 1307.55'
 2615.10'(OVERALL)

FOUND 4" X 4" CONCRETE MONUMENT
 WITH ALUMINUM PLATE
 STAMPED "PRM LB 6791"
 0.34' SOUTH
 0.32' EAST

789.85'
 FOUND 4" X 4" CONCRETE MONUMENT
 WITH ALUMINUM PLATE
 STAMPED "PRM LB 6791"
 0.39' SOUTH
 0.13' EAST

MINI ASSEMBLAGE P.U.D. PLAT SEVEN
 (PLAT BOOK 112, PAGE 167)
 P.B.C.P.R.
 NOT INCLUDED

LEGEND

- | | | | | | |
|------------|----------------------------------|--------|---|-------|------------------------------------|
| CL | CENTERLINE | R.P.B. | ROAD PLAT BOOK | R | RADIUS |
| D.B. | DEED BOOK | R/W | RIGHT-OF-WAY | L | LENGTH |
| D.E. | DRAINAGE EASEMENT | (C) | CALCULATED | Δ | DELTA ANGLE |
| FPL | FLORIDA POWER & LIGHT | (D) | DEED | | |
| O.R.B. | OFFICIAL RECORD BOOK | (P) | PLAT | PRM | PERMANENT REFERENCE MONUMENT |
| P.B.C.P.R. | PALM BEACH COUNTY PUBLIC RECORDS | ■ | SET 4" X 4" CONCRETE MONUMENT WITH ALUMINUM DISK STAMPED P.R.M. LB#6603 | PK | PARKER KAYLON |
| P.B. | PLAT BOOK | □ | FOUND PERMANENT REFERENCE MONUMENT AS NOTED | PLS | PROFESSIONAL LAND SURVEYOR |
| P.O.B. | POINT OF BEGINNING | ○ | SET MAG NAIL AND DISK PRM LB#6603 | PBCUE | PALM BEACH COUNTY UTILITY EASEMENT |
| P.O.C. | POINT OF COMMENCEMENT | ● | SET #5 IRON ROD AND CAP ENGENUITY LB#6603 | | |
| PG. | PAGE | | | | |

BETHESDA HEALTH CARE MUPD

A Higher Standard of Excellence
engenuity group inc.
 ENGINEERS • SURVEYORS • GIS MAPPING

DATE	11/26/13
SCALE	1" = 30'
CAD FILE	5013.07PL01
SDSK PROJECT	5013.07
DRAWN	STAFF
CHECKED	K.BECK

5/9
 JOB NO.
5013.07

1201 BELVEDERE ROAD, WEST PALM BEACH, FLORIDA 33405
 PH (561)855-1151 • FAX (561)832-9390
 WWW.ENGENUITYGROUP.COM